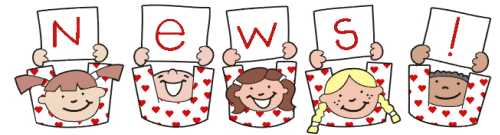


February 19<sup>th</sup>, 2019



Dear Families,

You should all have an email from SignUpGenius.com with our available times for your child's preschool parent-teacher conference on March 20<sup>th</sup> or 21<sup>st</sup>. Please use the link to sign up for a 30-minute block of time with either Miss Barello or Mrs. Hale. We will review your child's progress report and any other questions that you'd like to talk about! You should sign up ASAP for your preferred time slot because times are first-come, first-served. If you'd prefer a phone conference, we would be happy to give you a call during your time slot. Please just make a note of it when you sign up for the conference online. We can't wait to have the time to talk to you about your preschooler!

### Winter Field Trip:

#### Kohl Children's Museum

Please return your permission slips for the Kohl Children's Museum if you have not done so already! On February 28<sup>th</sup>, we will be meeting at the Kohl Children's museum. Please send in permission slips ASAP! We hope everybody can attend! Siblings are welcome, but a parent should attend with any younger siblings. If your preschooler is attending, a parent doesn't need to attend with him or her.

### Weekly Focus Update!

We have been cruising through the letters, numbers, shapes, and colors during our weekly focus each day at circle time! The kids have started to learn a few sight words too! Here is our focus this week:

Letter: O

Number: 15

Color: Yellow

Shape: Star

#### Sight Words

the and

you me

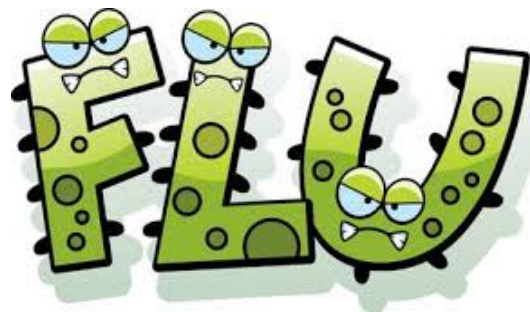
### Staying Healthy!

It seems that the flu has found its way to our classroom. We have had several students, mostly in the PM class, out this week with flu symptoms. Just so you know, we have thoroughly cleaned and disinfected our toys and classroom furniture. If you have a sick child, please please keep that at home! Students should be kept home if:

- Temperature is higher than 100 degrees
- Throwing up or have diarrhea
- Eyes are pink and crusty

All of these symptoms should be clear for at least 24 hours before a student returns to school.

**Please help us stop the spread of germs and illnesses! Thank you!**



# CENTERS AND REMINDERS

Center	Activities	Why are these activities so important?
<b>Blocks</b>	Lego table My Little Pony play set	Creative play; turn taking; strengthening fine and gross motor skills; task persistence and problem solving
<b>Table Toys and Games</b>	Pet vocabulary books	Visual discrimination; measurement and size; turn taking with a peer; hand-eye coordination
<b>Pretend</b>	Pizza Parlor!	Developing language and social skills; socialization and building friendships; imaginative and pretend play; sharing materials and turn taking
<b>Writing</b>	Pet words, markers, scissors and crayons	Fine motor skills; early literacy; language development
<b>Library</b>	Pet-themed books Class Books Magnetic letters and pet vocabulary	Book-handling skills; social interactions; imaginative and pretend play; early literacy
<b>Sensory</b>	Play dough, rollers and cookie cutters  Aquarium gravel with fish, frogs and turtles	Sensory; fine motor development; volume and measurement; science concepts—sink/float, solid/liquid, hard/soft; sharing materials with peers
<b>Snack</b>	Self-serve during center time	Self-help; language development and social skills
<b>Art</b>		Expressing creativity; developing fine motor skills; Applying new knowledge
<b>Tech</b>	Ipads (not available everyday)	Turn taking; developing hand-eye coordination and fine motor skills; practicing various cognitive skills (literacy, math, science concepts)
<b>Science</b>	Gear boards and gears	Exploring cause and effect; making observations; turn taking with peers



**February Birthdays!**  
15<sup>th</sup> - Samantha (AM)